

The Archives at the schools by the sea



Presented by Phil Stringer, October 2019

Origins

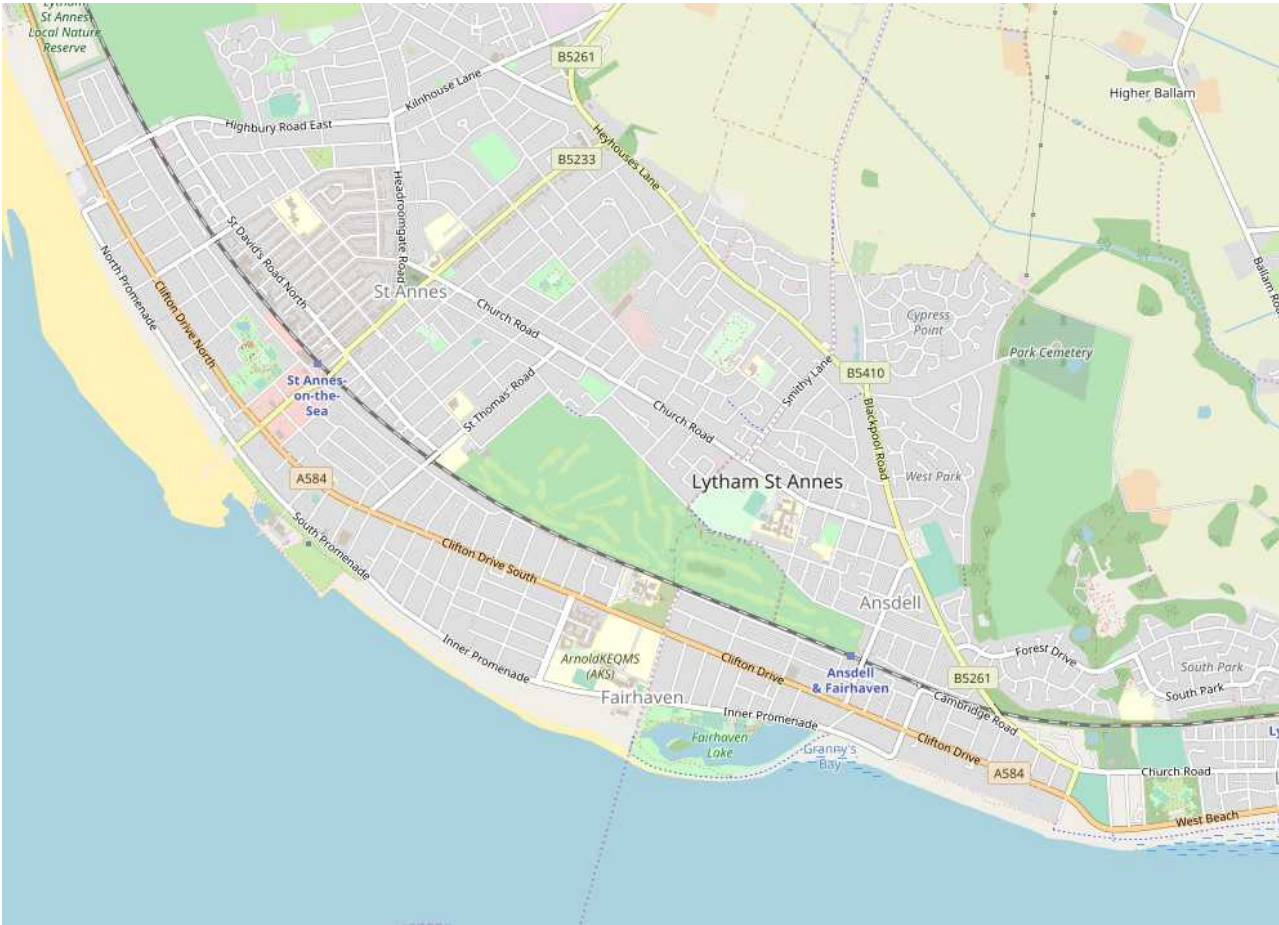
AKS is the result of the merger of :

- Arnold school, Blackpool
- King Edward VII school, Lytham
- Queen Mary school, Lytham

Arnold High School for girls followed another path

AKS is housed in the KES building

Location



History

- KES & QMS can trace their origins to the great flood of 1720
- This resulted in the founding of the Lytham Schools Charity which founded them in 1908 & 1930
- Arnold was founded in 1896 by Frank Truswell Pennington
- KES joined with QMS in 2000 following the government decision to abandon the assisted places scheme in 1997
- In September 2012, Arnold (Blackpool) and KEQMS (Lytham) merged as ArnoldKEQMS (AKS)

The great flood

- The story begins when Lytham was flooded in 1720
- Great damage occurred and an appeal for help was made
- £2,055 of damage was caused
- The collection raised £103 but the residents could not decide how it should be shared out
- So it was decided to use it to school the poor children
- The money and other small bequests was used to buy some land in Layton

Copy of the Petition by the Sufferers from the Great Flood in
the year 1720 to Quarter Sessions for a Brief:

To the Worshipfull his Majesties Justices of the Peace for
the County Palatine of Lancaster at the General Quarter
Sessions of the Peace to be held at Preston in & for the
said County on Thursday the 12th day of January 1720.

The humble Petition of Robert Bawbell, Richard Gerrard,
Thomas Wilkinson, James Carter, Thomas Ball, Robert
Bennet, Thomas Dewhurst, Robert Hardman, John Ball,
John Heys and Richard Fisher, Inhabitants farmers and
Tenants within the Townships of Lytham, Warton, and
Westby cum Plumpton within the County Palatine
abovesaid, Sufferers by a dreadfull inundacion of the Sea.

Copy of the Petition by the Sufferers from the Great Flood in the year 1720 to Quarter Sessions for a Brief:

“That upon Sunday and Monday the eighteenth and nineteenth days of December last past at the change of the moon and very height of the Spring Tide there happened to be a violent tempest of wind which occasioned such an extraordinary and uncommon flood that it broke down and washed away the Banks , Rampets and Sea Fences in the said towns and overflowed the greatest part of Land lying there utterly destroying their winter corn thereon growing and doing very great damage to all their houses, with the barns and outhousing thereto belonging and all their corn, hay and household goods and a great number of their cattle. And your petitioners being ready to make appear to your worships not only by their own oaths but also by oath of several credible persons who have viewed the premises that the damages done to your Petitioners by the said inundations amounts to £2,055.”

Copy of the Petition by the Sufferers from the Great Flood in the year 1720 to Quarter Sessions for a Brief:

Your Petitioners humbly pray that your Worships will be pleased to grant your Petitioners a proper Certificate under your hands with a Due Representacion of their said Losses in order to obtain his Majesties most Gracious Letters Patents for the collecting and receiving the Charitable Contribucions of all such disposed Christians as shall be duly touched with a sense of human Misfortune & therefore be Ready and willing in some Measure to Contribute to such an unexampled Losse, And your poor Petitioners shall pray ...

Jur. Robertt. Bawbell ...£10.

Richard Gerrard£50

Thomas Wilkinson£31. 5s.

.....£20

Robert Ball£12

Robert Bawbell

Richard Gerrard

Thomas Ball

Robert Bennet

Robert Hardman

Thomas Dewhurst

John Heys

Thomas Wilkinson

James Carter

John Ball

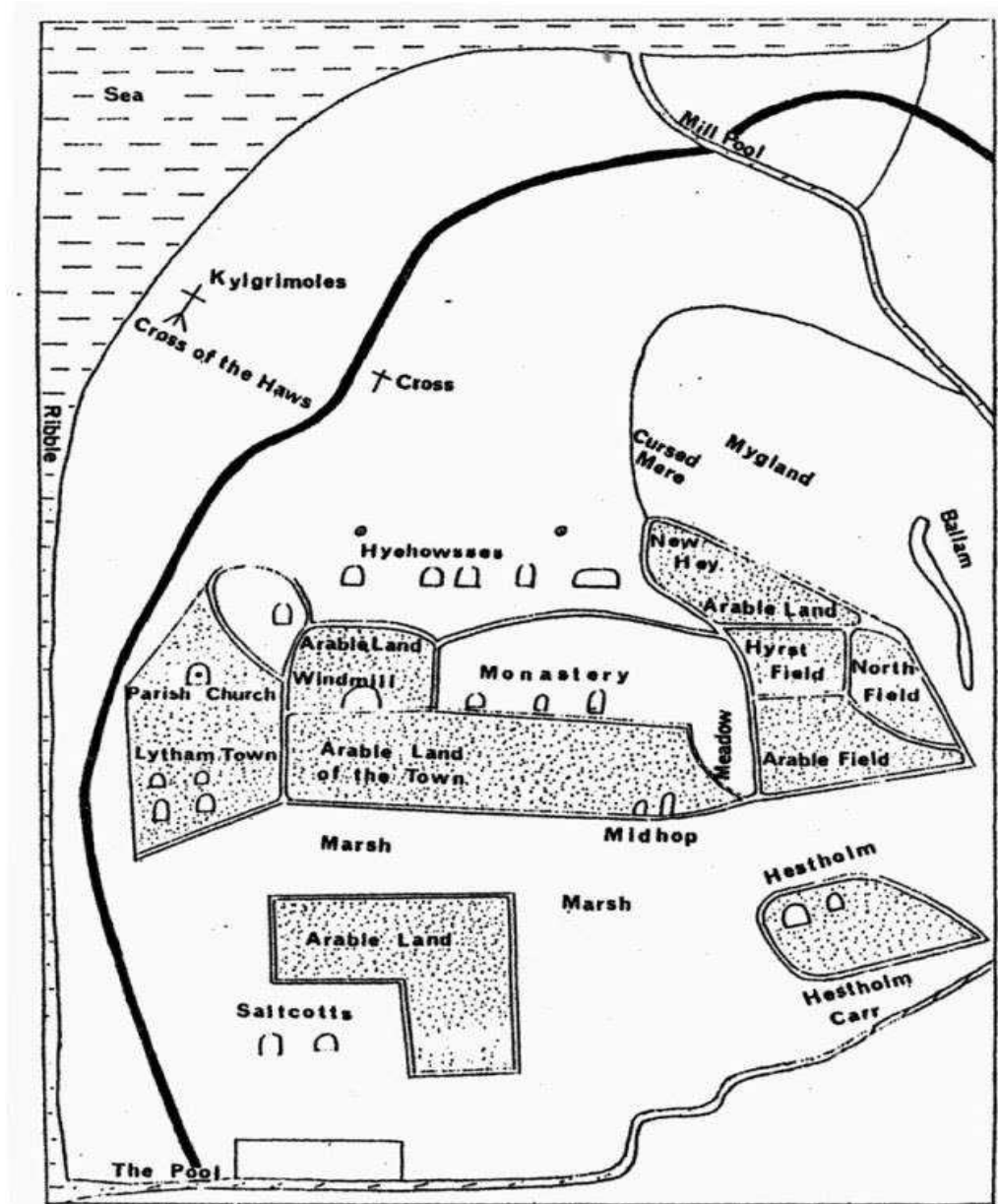
Richard Fisher

1868 - The National Gazetteer of Great Britain and Ireland

"HESKETH, a parish in the hundred of Leyland, county Lancaster, 9 miles N.E. of Ormskirk. It is joined with Beconsall, and includes the port of Hesketh Bank, being a subport to Preston. The village is situated near the junction of the rivers Douglas and Ribble. In 1720 the sea broke in between Hesketh and Cockerham, overwhelming a large tract of land. The living is a rectory in the diocese of Manchester, value £275. The charities consist of a share of those belonging to Croxton."

"Great losses sustained in Lancashire in December, 1720 by the violent overflowing of the sea". (Diary of Nicholas Blundell). Storm tides (wind-driven surge) had flooded 6600 acres of land, washed out 157 houses, and damaged 200 more. The main areas of damage were on low-lying land at Pilling Moss and Marton Moss near the Fylde Coast and the West Lancashire Moss between Formby & Tarleton. At Ince Blundell sea banks were breached, the River Alt floodgates were broken & more than 100 acres of productive farmland were damaged by seawater (salt contamination). Roads and bridges were also affected, including a public bridge in Great Crosby known at 'Foremost poole bridge' (Far Moss Pool bridge).

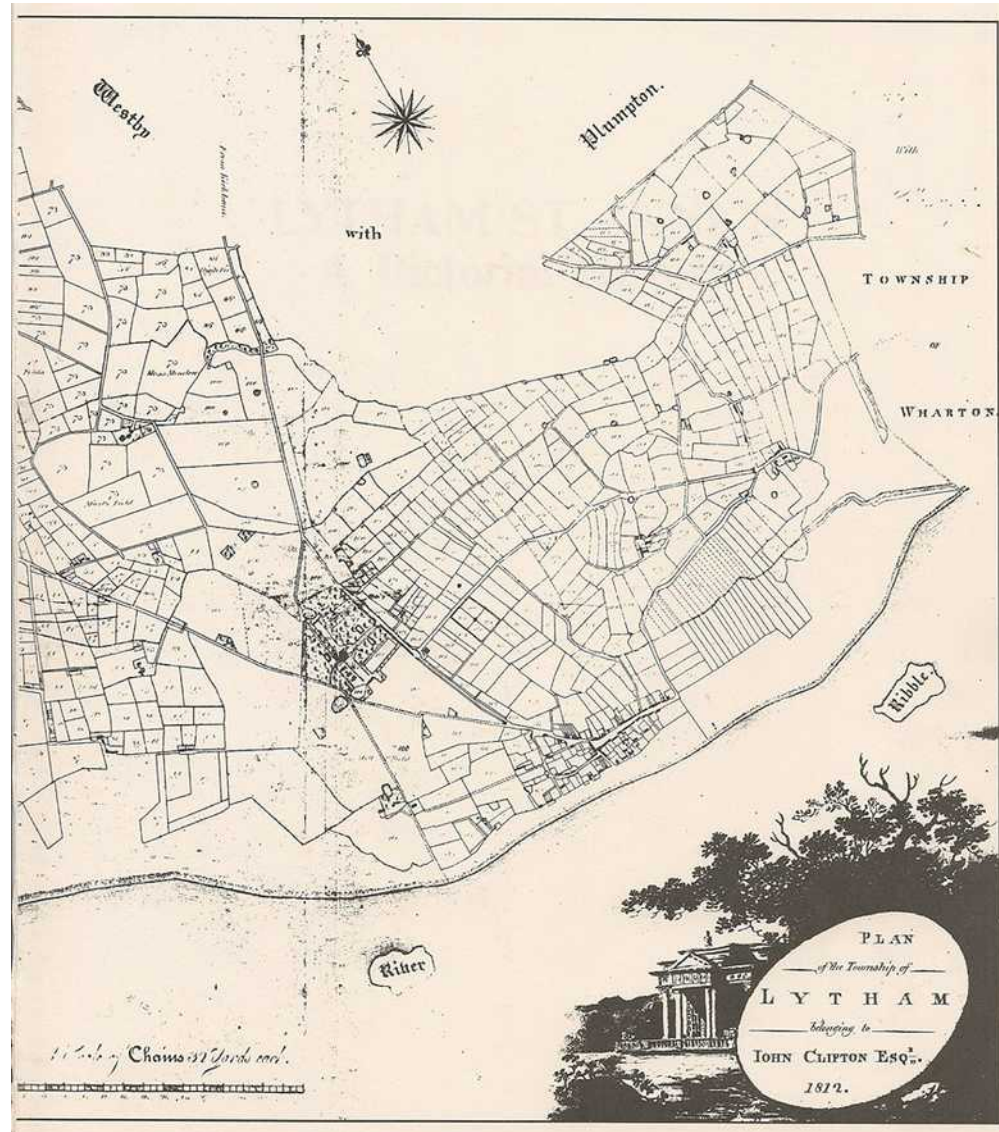
Lytham in the late 1500s



1690



1812



1812 old fields



1977



1927



1852

Lytham has also been a considerable sufferer by the storm. Several hundred yards of boulder stone wall, on the south side of Mr. Eden's seat north of Lytham (Fairlawn), with great weight of earth in front, have been totally swept away by the tide. The Clifton Arms Hotel (Mr. Knowles's) has been very much stripped of slates, and many panes of glass have been demolished by the flying pebbles from the beach, flung inland by wind and water.— Mr. William Miller's new houses, not yet finished, near the Market-house, have sustained considerable damage ; the wind gathered in the inside of the buildings through the open window-apertures, and blew off from the roof a great number of the slates.— Many other houses in Lytham have been damaged by the blowing away of slates and the falling of chimneys.

The sea has partially spoiled the dock by ripping up the boards; it has also washed up the road adjacent, thrown many schooners and flats on to the banks and beach, and many fishermen's boats have been taken as far as Mr. Cartmel's, nearly two miles inland. Of a great number of fishermen's boats that had been moored opposite to Lytham only four rode out the gale—the remainder went ashore at various places, and one fell to pieces altogether. Many of the poor owners are completely ruined. The Thomas Clifton, and John, of Preston, the sloop Alice, of Lancaster, and the Bee, are now lying on the beach—two of them between the mill and the watchhouse.

Mr. Cornelius Crookall , farmer, of Saltcoats, is a loser to a considerable amount by the irruption of the sea over the embankment on his land. A great part of his farm was completely covered with water, and produce of various kinds, including five stacks of grain, were irretrievably lost, and about fourteen acres of sown corn were washed away, the loss being quite £300.—The farm produce of Mr. Cookson has also received much injury in a similar manner.

8 October 1896

One of the strangest effects of the storm and tempest of last week was the inundation of a large tract of land at the growing watering-place of Fairhaven. The fury of waves dashing with much persistence on the new sea wall along a portion of the front was such that the wall gave some distance along, and in a moment there was a vast of waters across the long strip of low-lying land comprising golf links of the Fairhaven Golf Club.

The onrush of the waters with such unexpected suddenness and with such impetuous force, took by surprise some members who were in the clubhouse, and the stewardess, Mrs. Davenport. They were quickly surrounded by the rushing waters, and as the depth of the water was rapidly increasing they had no alternative but to wade ashore. Furniture was fetched from the clubhouse in boats, and deposited upon the shore of the now huge newly-formed lake, for the whole area of the links right away to the Bungalow was submerged, and the strong sou'wester lashed the water into great waves. It was impossible to empty the lockers in the club-house, and the red coats and golf-clubs of the members were rendered useless by their contact with the salt water.

Quickly the water rose as the tide rushed in until the waves actually reached the eaves of the club-house, washing to and fro as though they would bear the building from its foundation. In a short time, however, the water began to recede, and it was only for a few moments that this remarkable picture presented itself.

1907

EXTENSIVE DAMAGE ON THE FYLDE COAST.

The Fylde coast was swept by a devastating storm during Saturday night and Sunday morning last. The damage along the coast, between the Ribble and the Wyre, amounted to thousands of pounds. Heavy rain fell all day on Saturday, and a strong wind blew from the sea, but as night approached the wind increased in violence, bringing in the flood tide at a furious rate. At high tide the water reached a height that had not been known for years, and it was a distressing scene that met the eyes of many people on Sunday morning.

The extraordinarily high tide flooded all the low-lying lands, and in addition, in many places the embankments had been broken by the fury of the waves. Acres of land were under water, and along the banks of the Ribble the farmers have suffered serious losses from the drowning of sheep and poultry. At Lytham the Ribble Laundry suffered severely. Boundary walls were thrown down by the onrush of the water, and the valuable plant was submerged. The damage here is estimated at about £600. At Lytham Destructor Works the fires were extinguished by water, and the stoker had a thrilling experience in making his escape. Houses in the neighbourhood of the Shipyard were flooded, and the furniture was floating about.

At Ansdell and Fairhaven the hulking was broken in two places, and the water, coming over the Marine Drive, washed portions of the sandshield away, along with several tons of the ballast on which the temporary line of railway is laid. One of our illustrations shows one of these fissures about ten feet deep and from thirty to forty feet long.

Park View Rd 1907



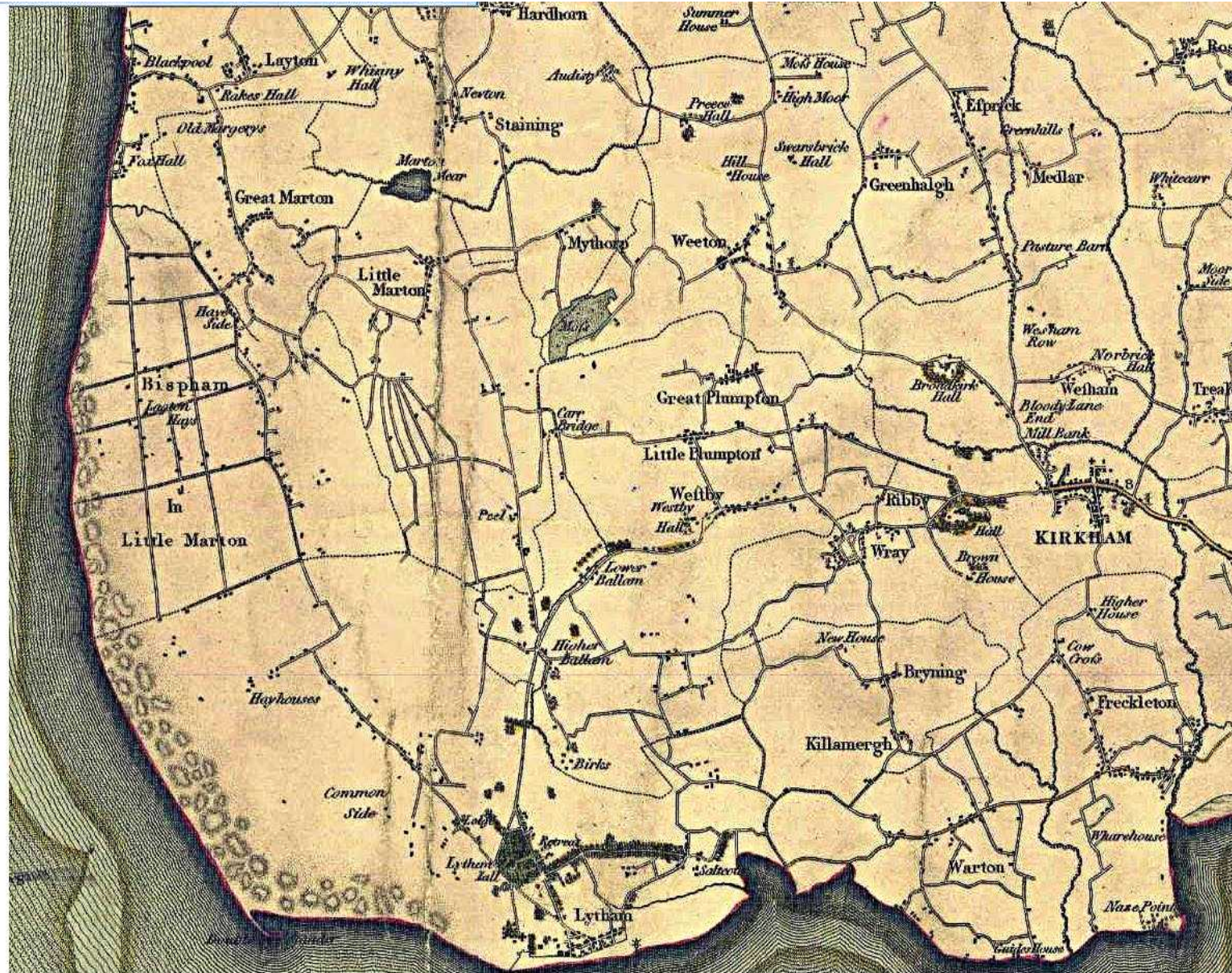
Park View 2019



Mythop 2019



1818



Early years

- A few bequests provided a little more funding and this was invested in land.
- Lytham land was leasehold so they bought 25 acres of land in Layton.
- This funded Lytham Endowed school (St. Cuthbert's).
- This was near Lytham hall but moved to Church Road and it was rebuilt in 1853.
- In 1821 a small school was built at Heyhouses.

First Heyhouses school 1821-1959



Lytham Endowed – St Cuthbert's

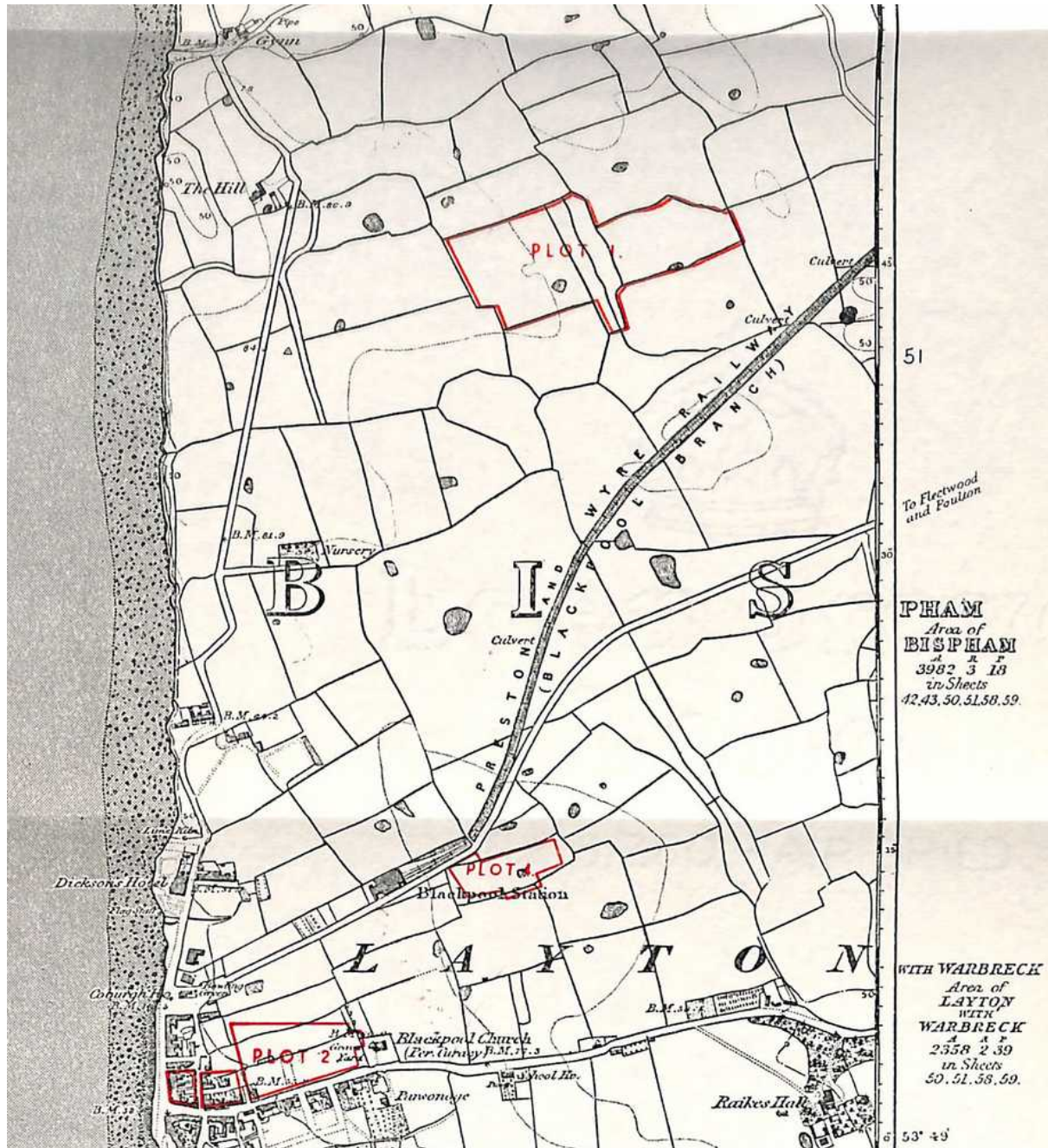


Lytham Endowed School (St Cuthbert's) 1975 by David Forshaw

Secondary schooling

In 1901, when the income of the Lytham Charities was about £1,200 per year, a Trustees' meeting was called. A resolution was passed that "it is desirable to erect within the Ancient Parish of Lytham a good secondary school for boys". It was also agreed that any preferential advantages would be limited to children living in the area of the Ancient Parish of Lytham.

Foundation land in Layton



Construction

- The school open in 1908 whilst part was still being built and the cost was £59,424.
- This was funded by selling some of the Blackpool land.
- The building materials were brought to the site by train.
- The Fairhaven estate railway ran down St Paul's Avenue.
- It is also interesting to relate that with the consent of the Lancashire County Council, an alteration in the boundary between Lytham and St. Anne's-on-the-Sea was agreed so that the School would be erected partly in Lytham and partly in St.Anne's.

King Edward VII school funding

- They considered having a boarding school, but did not have funds for that.
- The original fees were £4 per term, 10% of the places were funded by the charity.
- Some places were funded by Lancashire county council.
- In 1944 it became a direct grant school, free on passing 11+
- When that was scrapped, there was the Assisted Places Scheme.
- That was scrapped in 1997 and it became a fully independent school.

Politics has had a major influence on the funding of the school and consequently the number of pupils and classrooms required.

Changes over the years

- In 1930 a separate girls school, Queen Mary's was built on the corner of the KES site
- In 2000 KES and QMS merged to form KEQMS housed in the KES building
- QMS was converted into housing to provide more funding
- On June 1st 2008, Arnold School joined the United Church Schools Trust (UCST).
- In 2011 KEQMS decided to join UCST, and it was agreed to merge the two schools on the Lytham site
- Both schools came together fully on the Lytham campus in 2013

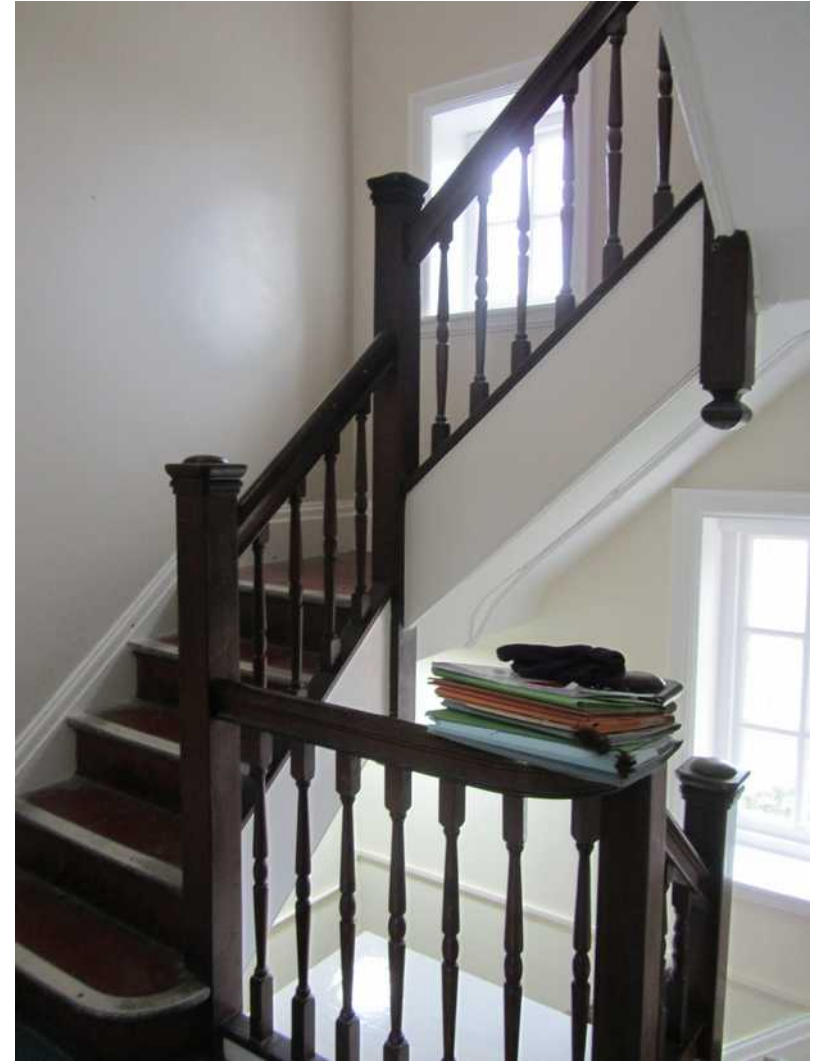
AKS Archives



Archives

- We are housed in the attics of the original headmaster's house
- We have a good collection from KES, but some from QMS did not survive the move
- A good collection was moved from Arnold as we had an archivist in post then
- Now it is all managed and maintained by volunteers

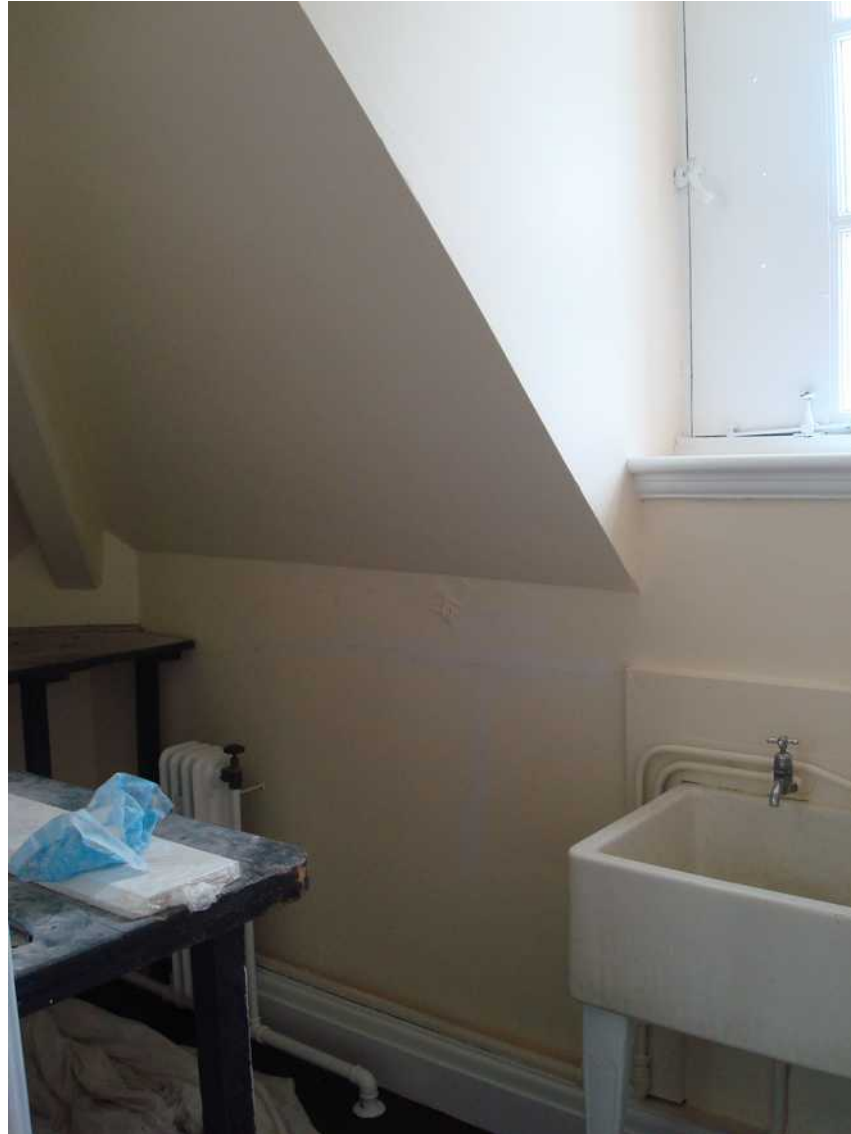
Going up



Entrance



Kitchen



Main corridor



Queen Mary – room 3



King Edward – room 5



King Edward – room 5



Archives office



Arnold



KEQMS + AKS



Archivists and access

- All our volunteers are DBS checked as we are housed within the school
- We work in 3 teams according to our old school
- We can provide information from the archives under GDPR rules
- We can arrange visits to view the archives
- We have had 2 exhibitions and events such as Heritage Open Days

What do we hold?

- Artefacts such as uniforms, school photographs and various memorable items
- Paper records, the more recent ones are more likely to have survived and been retained
- Admission registers, pupil files
- Memorable events e.g. school plays
- Pictures, governors minutes, finance records
- School magazines

Archiving

- All items are stored using archiving standards
- In acid free boxes
- Only brass paper clips
- Papers wrapped in acid free card
- Uniforms in muslin bags
- Items number added in pencil
- Recorded in the archive catalogue

Archive catalogue

- Software used is “Archive Manager”
- Each item has a unique id e.g. KE/MAG/02/001
- With a name, description, location & picture
- Items grouped by series
- Condition & access restrictions noted
- Can be viewed via AKS web site

AKS web site

AKS Lytham > About AKS > Community > Archive - Mozilla Firefox

File Edit View History Bookmarks Tools Help

AKS GENI GENI Gaze Lanc Lanc Search PRON How Tow Scho Lewi Web BT H Docu OS Zoon GENI

https://www.akslytham.com/about-aks/community/archive Search



admissions 01253 784104
nursery 01253 784130
preparatory 01253 784110
senior 01253 784100

links > RSS f t i y l

Home About AKS Nursery Preparatory Senior Sixth Form News and Events Admissions Contacts

- Safeguarding
- United Learning
- Teacher Training
- Community
- Parents' and Teachers' Association
- LSA Classical Association
- Ladies' Luncheon Club
- OAKS
- Old Arnoldians
- Old Lidunians
- QMS Association
- Archive**
- News from The Front
- Parent Portal
- Facilities Hire
- Remote IT Access
- Lytham Parents' Speakers Series

The AKS School Archive was established following the merger of Arnold and KEQMS. The archive collects and preserves all kinds of records relating to the history of Arnold, KEQMS, King Edward VII and Queen Mary schools making them available for research. Over time we will add AKS material to the collection.

Amongst the records we currently hold are school magazines, speech and prize day programmes, admission registers, school photographs and artefacts such as examples of uniform and trophies.

A small team of volunteers are working hard to support the archive and to make the catalogue available online. The catalogued items for each school will have a unique reference number incorporating the school reference codes which are as follows:

- AS - Arnold,
- KEQM - KEQMS
- KE - King Edward
- QM - Queen Mary

Alumni are always welcome to visit AKS Lytham and visit the archives, please contact joe.matthews@akslytham.com for more information.

[Click here](#) to access the archive catalogue. Further instructions to guide your search are available under the help tab.

We would like to suggest that you check back regularly as work on expanding the catalogue continues.

We very much welcome donations to the archives. All research is carried out by the archive volunteers and any donations received will support their work and the cost of materials that are provided on request, e.g. personal copies or display materials for reunions, special events, etc.

Should you wish to make further enquiries please be aware that access to the archive is by appointment only. Applications to consult the archive should be addressed to archives@akslytham.com or alternatively in writing to the Archivist, AKS, Clifton Drive South, Lytham St Annes, Lancashire, FY8 1DT. It would be helpful if you could outline your topic of research. Certain records will be closed for a set period of time due to confidentiality and Data Protection legislation.

And finally, if you do think you may have items of interest you would like to contribute to the archive, please [click here](#) for a copy of our Collection Policy.

Thank you for visiting the AKS Archive. We hope you find it informative.

https://archives.akslytham.com



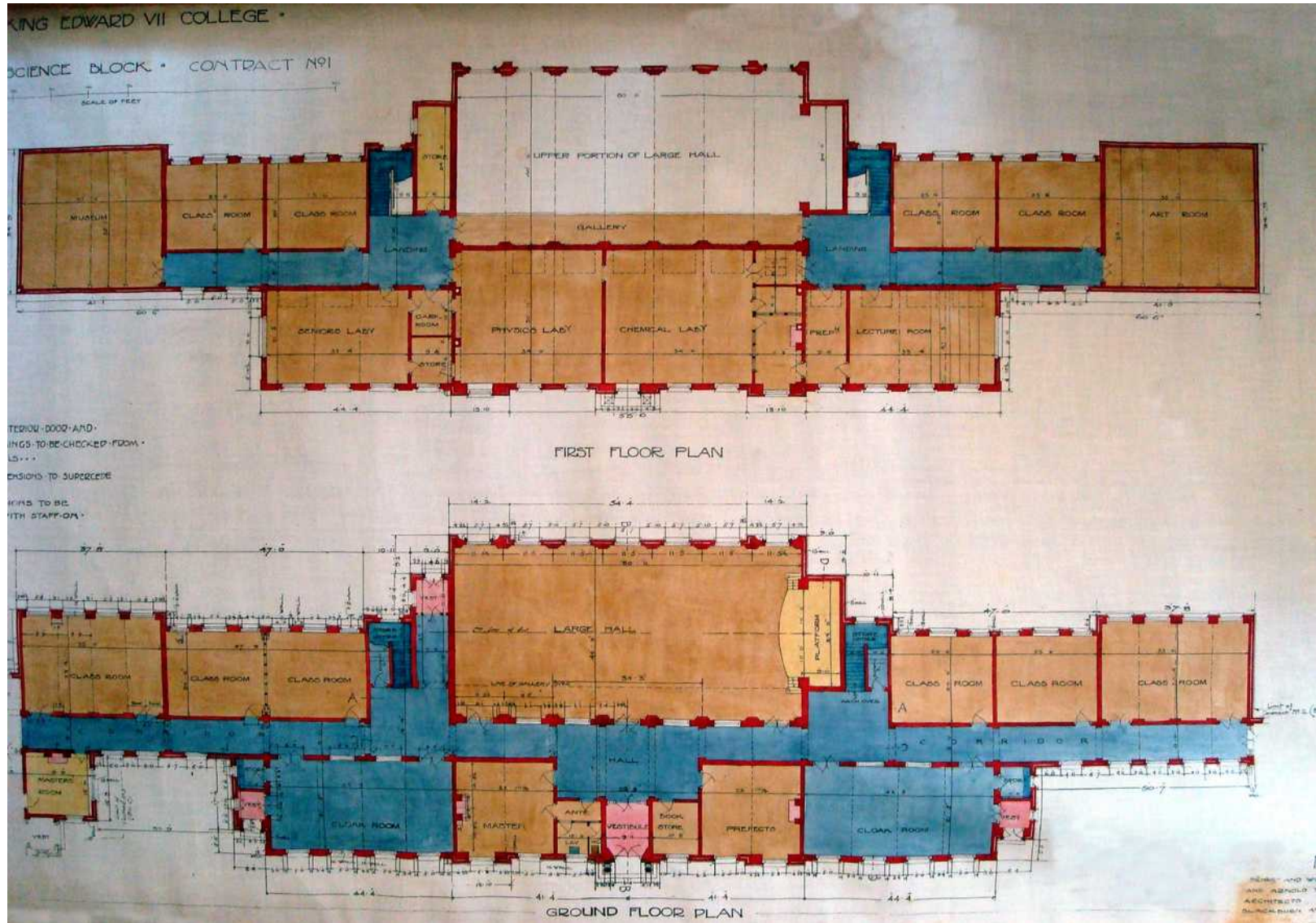
Uniforms



Carved by Jim Massey (woodwork)



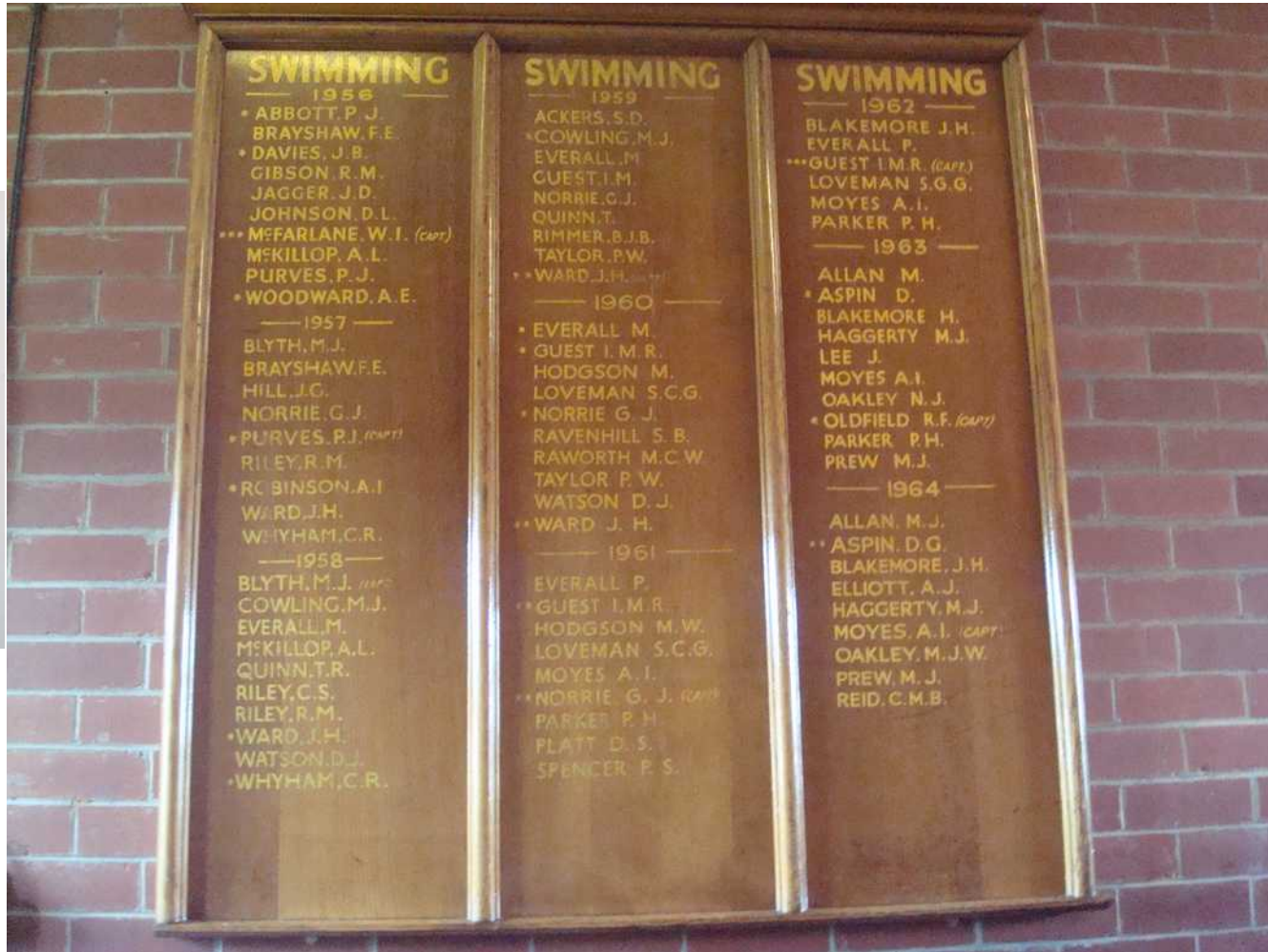
Plans



War Memorial



Honours Boards



KES 1961

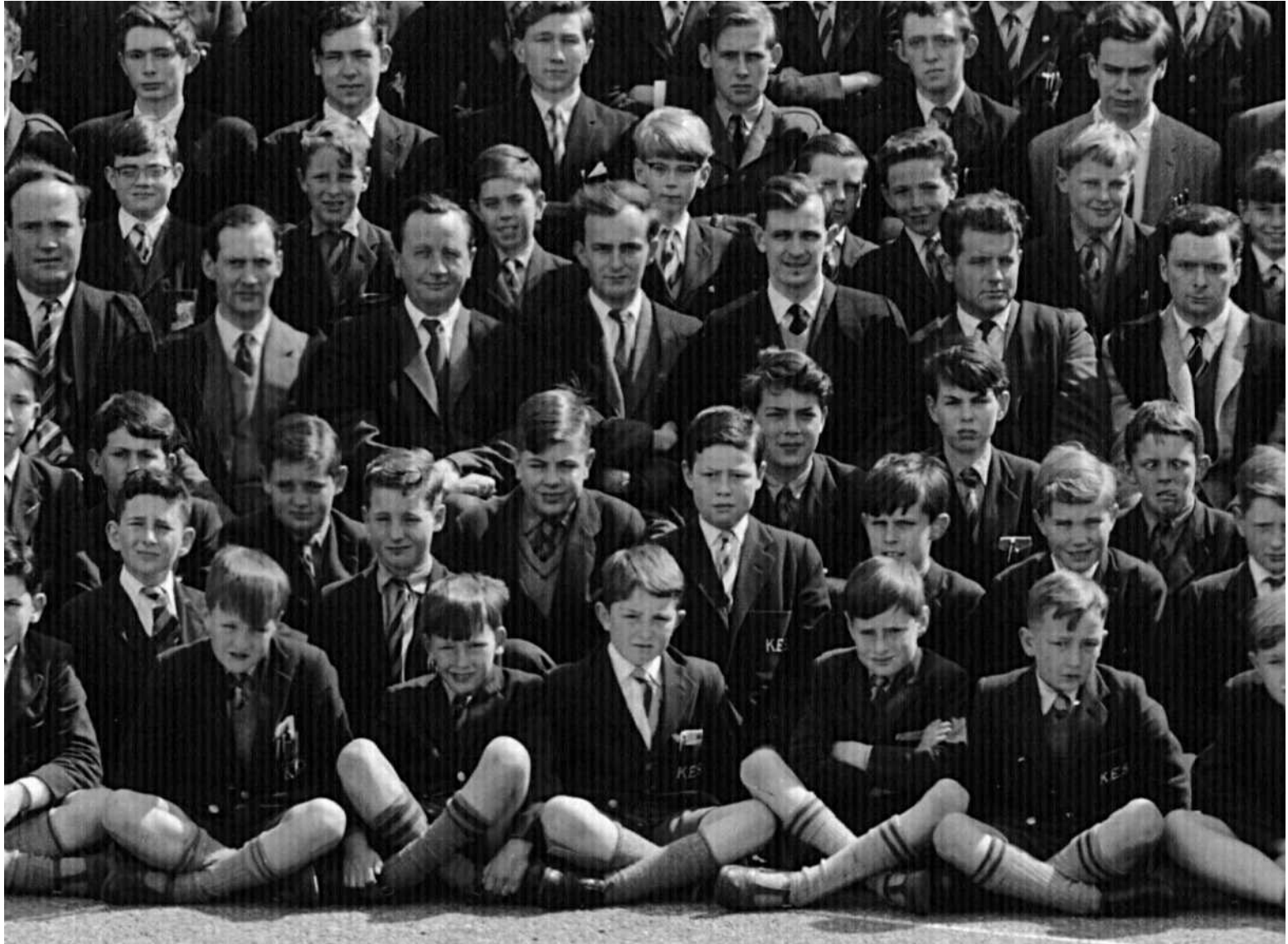


KING EDWARD VII SCHOOL, LYTHAM



Printed by GLENDELL RD LONDON, E.C.1

1961



Student records

- Admission registers
- Individual files in later years (not for QMS)
- Name, dob, address, parent + occupation
- Previous school
- Exam results
- Terms attended
- Pictures for those in more modern times
- Next education or job

Early admission register

King Edward VIII School

Surname Parsons Christian Names Harold Galemer No. 193
 Name of Father or Guardian J. Ash. Parsons Postal Address 20 St George's Road, St Ann's on Sea. Sex ♂

1. Date of Birth.			8. Place of Residence.		9. Occupation of Father.	10. Place or places of previous education during the two years preceding admission.		
Day	Month	Year	County Borough or County	City or Urban District or Rural Parish				
30	6	1917	Lancs.	St Ann's on Sea	Wesleyan Minister.	Montauban	Private	
2. Date of Admission.			3. Date of Leaving.		11. Particulars of any exemption from Tuition fees.			
Day	Month	Year	Day	Month	Year	12. Particulars of any Public Examinations passed or Certificates obtained while in the School, with dates.		13. Date of Recognition as Honorar or P.T. in the School.
16	9	1910			1912			
4. Position on Admission.			5. Position on Leaving.			6. Boarder or Day-Scholar.		
						Day-Scholar		
7. Terms kept.			14. Scholarships or Exhibitions for further education.			15. Place of further education.		
Autumn	Spring	Summer						
'10	'11	'11						
'11	'12	1912						
16. Occupation taken up after leaving.			17. Remarks.					
			V.C. (1917)					

Hardy Parsons



Spreadsheet of KES pupils

- Produced from admissions registers
- Name, dob, student number, start & leaving dates
- Makes it easy to discover if a boy was pupil & when he attended

No spreadsheet for Arnold or QMS

Frequently used records

- School magazines
 - ◆ We have scanned most magazines now
 - ◆ Using OCR to produce searchable PDFs
 - ◆ We can search an entire set for a name
 - ◆ Can be downloaded via catalogue on web site
- KES blue book
 - ◆ Pupils in each class, houses, dob & 11-plus
 - ◆ Societies, teachers and basic information

Sport

- The two most important matters at KES were school work, exams etc. And of course sport.
- This was Rugby in Autumn/Winter, Athletics in the spring, and cricket in the summer.
- From 1950 onwards we have details of the teams and the matches played against other schools.

Sport – Rugby 1927-8



KEQMS + ?Arnold



Steeplechase



1918 1st 11



Clubs & societies

- Not a lot has survived but we have details of some of the clubs and when they were active.
- The Scout troop and the ATC were based at KES but were separate organisations.
- The most information we have is for the Drama Club who produced the school plays.

Mikado 1954



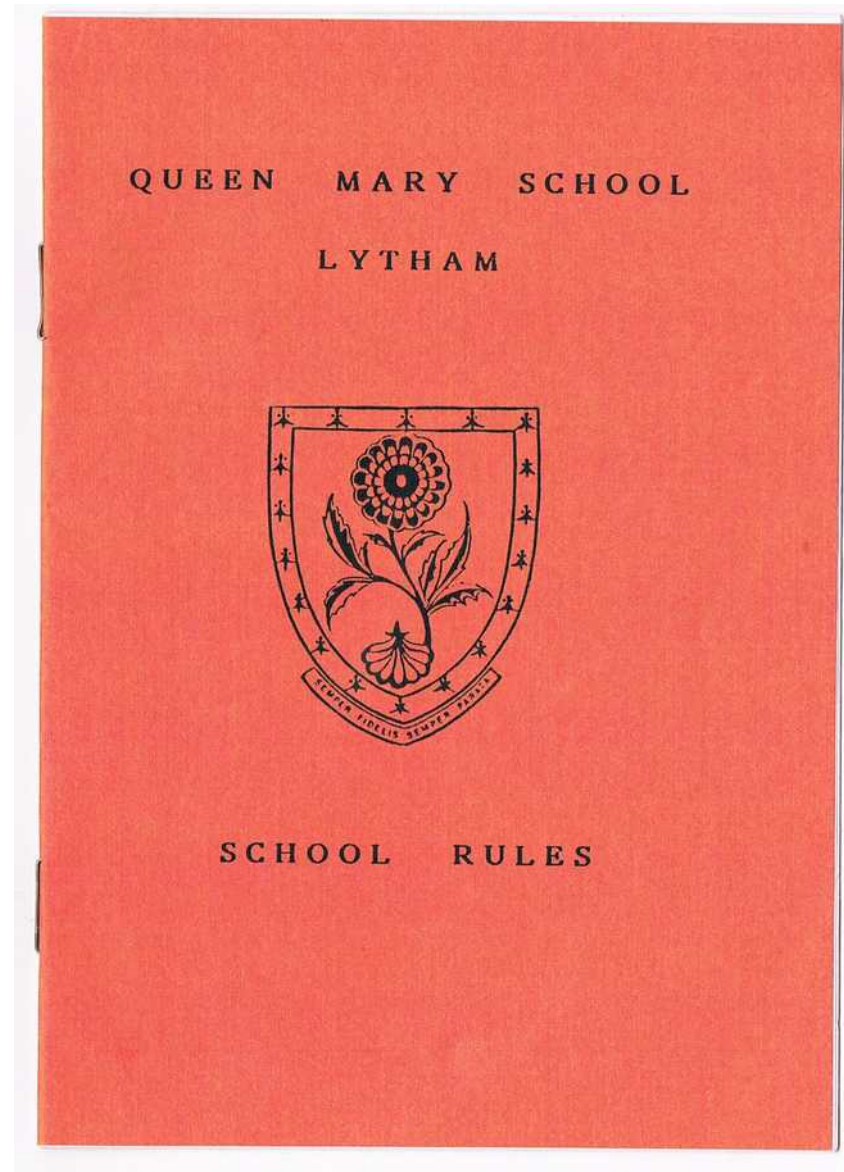
QMS Fire watching rota 1941

Monday Apr 14th
Miss B Brown Two Warden from No 8
Miss D Linnor Post called 10 o'clock suggested
the curtain in the Hall
Mr S Lorange be drawn at Blackout hour
Roy L Sutcliffe
All quiet R.L.S.

Tuesday 15. Apr. 41
Miss J Ford Miss Bailey called at 8.45 PM
Miss B Brown Alert - 9.55 PM - 4.0 AM
Miss D Lill Two Wardens called at 10.5 PM.
Mr. Mein. The books on both side door require
attention W.M.

Incendiaries appeared to have been dropped the
other side of the Railway over a long range
causing fires at - 2.45 AM which were brought
under control by 3.30 AM. W.M.

School rules



Arnold military honours

Military Honours.

V.C.

SCHOFIELD, 2nd Lieut. J. ... 2/5th Lancashire Fusiliers.

MILITARY CROSS.

BAIN, 2nd Lieut. K. S. ... Duke of Wellington's West Yorkshire.

BICKERSTAFFE, Lieut. T. S. ... 202nd Machine Gun Corps.

BROCKLEHURST, Capt. J. G. ... East Lancs. Army Service Corps.

BUCKLEY, Capt. G. B. ... Royal Army Medical Corps.

FISHER, Major C. S. ... 38th Heavy Battery, Royal Garrison Artillery.

WADE, 2nd Lieut. P. ... 6th Loyal North Lancashire.

DISTINGUISHED FLYING CROSS.

BOWMAN, Capt. C. ... Royal Air Force.

DISTINGUISHED SERVICE MEDAL.

EVANS, Lieut. B. ... H.M.S. "Hercules," R.N.R.

MILITARY SERVICE MEDAL.

KENYON, Private N. ... Royal Army Medical Corps.

ITALIAN CROCE di GUERRI.

BAIN, 2nd Lieut. K. S. ... Duke of Wellington's West Yorkshire.

KNIGHT OF THE ORDER OF THE CROWN OF ITALY.

WHEWAY, Capt. G. D. ... 185th Machine Gun Corps.

BRONZE VALORI OF ITALY.

BAIN, 2nd Lieut. K. S. ... Duke of Wellington's West Yorkshire.

CROIX de GUERRE (Belgian).

READ, Captain E. ... Royal Field Artillery.

MENTIONED IN DESPATCHES.

BROCKLEHURST, Capt. J. G. ... East Lancs. Army Service Corps.

FISHER, Major C. S. ... 38th Heavy Battery, Royal Garrison Artillery.

HINDLE, 2nd Lieut. H. ... Royal Garrison Artillery.

SCHOFIELD, 2nd Lieut. J., V.C. ... 2/5th Lancashire Fusiliers.

WHITTAKER, Captain R. E. M. ... Royal Air Force.

WINTER, Capt D. B. ... 4th Duke of Wellington's West Riding.

A recent piece of research

Stephen Coates at KES 1929-1936



Lectern



Conclusion

- Many schools do not have an archive & most will have less material than we hold
- The information within them can be very useful and also provide a social history of the time period
- To visit AKS archives you need to arrange a visit
- Details on the AKS web page or contact me